

# Cruise the **HAWAIIAN ISLANDS**

**March 6-13, 2027**



**7-Day Inter-Island Hawaii Cruise on the NCL Pride of America**

## **Independent Special Offer**

**7 DAYS. 5 PORTS. 1 AMAZING VACATION.**

**SATURDAY, MARCH 6, 2027**

Honolulu, Hawaii 7:00 PM Embark

**SUNDAY, MARCH 7, 2027**

Kahului, Maui 8:00 AM (overnight)

**MONDAY, MARCH 8, 2027**

Kahului, Maui 6:00 PM

**TUESDAY, MARCH 9, 2027**

Hilo 8:00 AM - 6:00 PM

**WEDNESDAY, MARCH 10, 2027**

Kona 7:00 AM - 5:30 PM

**THURSDAY, MARCH 11, 2027**

Nawiliwili, Kauai 9:00 AM (overnight)

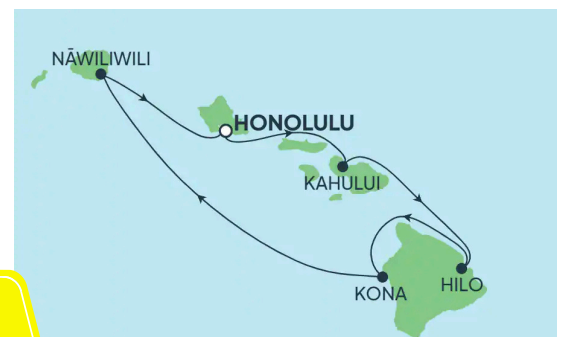
**FRIDAY, MARCH 12, 2027**

Nawiliwili, Kauai 5:30 PM

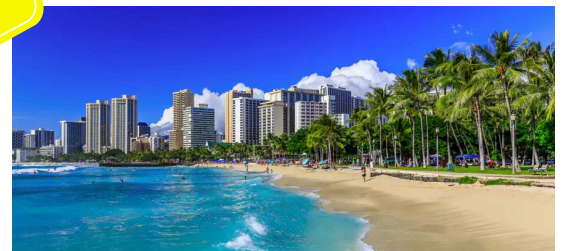
**SATURDAY, MARCH 13, 2027**

Honolulu, Hawaii 7:00 AM Disembark

*Map illustration may contain port order and/or port substitutions, please review itinerary listing for actual list of ports. Port arrival and departure times are approximate and subject to change without notice.*



**2027**





# STATEROOM ACCOMODATIONS

*Cruise only independent pricing. Prices shown include prepaid gratuities, taxes and port fees. Call today for a quote on your preferred stateroom category. Rates quoted are subject to availability and can change. A deposit guarantees the rate.*

## BB Balcony Stateroom

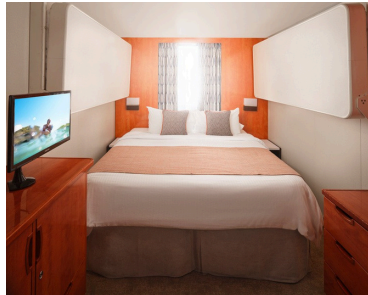


These staterooms include two lower beds that convert into a queen-size bed and some feature a convertible sofa to accommodate one more. Along with a sitting area, floor-to-ceiling glass doors and a private balcony offering great views.

**Salem Travel Price for two:**  
**\$6,423.90**



## OK Obstructed Oceanview Stateroom



These staterooms combine comfort and value. They include two lower beds that convert into a queen-size bed, and a picture window with an obstructed view.

**Salem Travel Price for two:**  
**\$4,946.42**



## IA Inside Stateroom



These staterooms are the most affordable way to cruise. They include two lower beds that convert into a queen size bed

**Salem Travel Price for two:**  
**\$4,692.78**



## experience **MORE** at sea™

NCL NORWEGIAN CRUISE LINE

Includes Unlimited Open Bar, 3 Meals  
Specialty Dining,  
\$50 Shore Excursion Credit per stateroom,  
and 150 Wi-Fi Minutes:  
(\$540 for two)  
OR  
\$100 Onboard Credit, 10 Photo Package,  
\$50 Shore Excursion Credit per stateroom,  
and Wi-Fi Package: (\$0)

Includes Unlimited Open Bar, 3 Meals  
Specialty Dining,  
\$50 Shore Excursion Credit per stateroom,  
and 150 Wi-Fi Minutes:  
(\$540 for two)  
OR  
\$100 Onboard Credit, 10 Photo Package, \$50  
Shore Excursion Credit per stateroom, and  
Wi-Fi Package: (\$0)

Choose 2 of the following options:  
Unlimited Open Bar  
(\$420 for two),  
1 Meal Specialty Dining  
(\$40 for two),  
\$50 Shore Excursion Credit per stateroom (\$0),  
150 Wi-Fi Minutes (\$0),  
\$100 Onboard Credit (\$0),  
or 10 Photo Package (\$0)

### OPTIONAL TRAVEL PROTECTION

\$184.00 - \$291.00 per person

*Travel Protection plans are available for guests to purchase in order to protect themselves against unforeseen expenses that they can encounter while traveling such as trip interruptions, loss of baggage or unexpected medical expenses. Purchase is optional. Salem Travel highly recommends that every guest purchase Travel Protection to include trip cancellation coverage. Ask your Salem Travel agent for more details and pricing.*

**Complete Package with Air + Hotel in Honolulu can be added. Fly in early, or stay an extra day or two for an extraordinary cruise experience!**